

# Public Document Pack



## EXECUTIVE DECISION DAY NOTICE

Executive Lead Member for Children's Services Decision Day &  
Executive Member for Education Decision Day

**Date and Time** Tuesday 11th July 2023 at 2.00pm  
**Place** Virtual Teams Meeting - Microsoft Teams  
**Enquiries to** members.services@hants.gov.uk

Carolyn Williamson FCPFA  
Chief Executive  
The Castle, Winchester SO23 8UJ

## FILMING AND BROADCAST NOTIFICATION

This decision day is being held remotely and will be recorded and broadcast live via the County Council's website.

## AGENDA

### EXECUTIVE LEAD MEMBER FOR CHILDREN'S SERVICES

#### DEPUTATIONS

To receive any deputations notified under Standing Order 12.

#### KEY DECISIONS (NON-EXEMPT/NON-CONFIDENTIAL)

**1. CHILDREN'S SERVICES CAPITAL PROGRAMME UPDATE** (Pages 3 - 26)

To receive a report seeking approval for submission to the Leader and Cabinet of the revised Children's Services Capital Programme for 2023/24 and amendments to the programme for 2024/25.

**2. CHILDREN'S SERVICES PROCUREMENT - APPROVAL TO SPEND [HIEP]** (Pages 27 - 40)

To receive a report seeking approval to spend in relation to the commissioning of locum educational psychologists (EPs) to support the production of Education, Health and Care Plans (EHCPs).

## **NON KEY DECISIONS (NON-EXEMPT/NON-CONFIDENTIAL)**

### **3. BARNCROFT PRIMARY SCHOOL AGE RANGE (Pages 41 - 48)**

To receive a report providing feedback on the statutory public notice in relation to the proposal for Barncroft Primary School to lower their age range and take children from age 2 years old alongside delivering nursery provision.

## **EXECUTIVE MEMBER FOR EDUCATION**

### **DEPUTATIONS**

To receive any deputations notified under Standing Order 12.

## **KEY DECISIONS (NON-EXEMPT/NON-CONFIDENTIAL)**

N/A

## **NON KEY DECISIONS (NON-EXEMPT/NON-CONFIDENTIAL)**

### **4. HOUNSOME FIELDS PRIMARY SCHOOL, BASINGSTOKE (Pages 49 - 70)**

To receive a report seeking spend approval to the proposed new Hounsome Fields Primary School at the total cost of £14,550,000.

### **ABOUT THIS AGENDA:**

**On request, this agenda can be provided in alternative versions (such as large print, Braille or audio) and in alternative languages.**

### **ABOUT THIS SESSION:**

**The press and public are welcome to observe the public sessions of the decision day via the webcast.**

## HAMPSHIRE COUNTY COUNCIL

### Decision Report

<b>Decision Maker</b>	Executive Lead Member for Children's Services
<b>Date:</b>	11 July 2023
<b>Title:</b>	Children's Services Capital Programme Update
<b>Report From:</b>	Director of Children's Services and Director of Corporate Operations

**Contact name:** Peter Colenutt, Assistant Director, Regeneration and Growth, Hampshire 2050

**Tel:** 01962 846270

**Email:** Peter.colenutt@hants.gov.uk

#### Purpose of this Report

1. The purpose of this report is to seek approval for submission to the Leader and Cabinet of the revised Children's Services Capital Programme for 2023/24 and amendments to the programme for 2024/25.

#### Recommendation(s)

2. That the revised capital programme cash limit of £51.313m for 2023/24 be approved.
3. That the revised 2023/24 capital programme along with the transfer of resources between years as set out in Appendix 1 be approved along with the amendments to the 2023/24 capital programme.
4. That the following variations to the 2023/24 capital programme be approved:
  - That it be recommended that resources of £0.9m be added to the 2023/24 capital programme for the expansion at Bordon Infant and Junior Schools.
  - That it be recommended that resources of £0.185m are added to the 2023/24 capital programme for the creation of a new Eco excellent library at Bridgemary Library.
5. That the amendments to the 2024/25 capital programme be approved.
6. That it be a recommendation to cabinet that the uncommitted funding of £19.33m as set out in Appendix 2 be carried forward from 2022/23 to the 2023/24 capital programme.
7. It is recommended that approval be given to the Director of Children's Services to determine those sites that require modular buildings for the

2023/24 academic year and that the sites listed in Appendix 3 be approved.

8. It is also recommended that approval be given to the Director of Children's Services to allocate £1.1m of identified Dedicated Schools Grant (DSG) revenue funding to support the short-term hire and relocation of existing modular buildings. It is also recommended that approval be given to the Director of Children's Services to allocate £2m to those sites that have been determined as requiring the purchase of new modular buildings.
9. That approval is given to the Director of Children's Services in discussion with the Executive Lead Member for Children's Services to undertake all required consultations linked to the projects listed in this report.
10. That the Access Improvements in Schools projects identified in Appendix 4 be approved.
11. That the projects approved under delegated powers by the Director of Children's Services in Appendix 5 are noted.
12. That the School Suitability Programme projects identified in Appendix 6 be approved.

### **Executive Summary**

13. This report sets out the updated Children's Services Capital Programme for 2023/24 and amendments to the programme for 2024/25 and provides an update on the DfE School Rebuilding Programme.
14. The report has been prepared in consultation with the Executive Lead Member for Children's Services (ELMCS). It will be reported to the Leader and Cabinet on 18 July 2023 to make final recommendations to County Council on 20 July 2023.

### **Background**

15. The Secretary of State for Education has now announced details of individual local authority Basic Need allocations for 2025/26 along with the 2023/24 allocations for School Condition Allocation (SCA) and Devolved Formula Capital (DFC) for schools.
16. The Children's Services Capital Programme is based on government grants, capital receipts, developer contributions and local resources.

### **Basic Need Allocation 2025/26**

17. The most recent capital announcement by the Department for Education (DfE) on 28 March 2023 provisionally made an allocation to Hampshire for 2025/26. The amount to be allocated has yet to be confirmed and will be brought to future Decision Day. The DfE has developed a fair and transparent

method of allocating basic need funding that directly relates to the forecast need. In Hampshire, some new school place funding has been provided for places yet to be delivered.

18. There is the potential for a zero or very low capital allocation in 2026/27 as the DfE assesses the impact of the free school places they directly fund. At this stage, it is unclear exactly how this will be calculated, with guidance expected from the DfE.

### **Special Educational Needs and Disability (SEND) Strategy**

19. As reported in January 2023, the government announced it will build up to 60 new centrally delivered special and Alternative Provision (AP) free schools as part of the £2.6 billion capital investment in high needs provision across the Spending Review Period, to open from September 2025, creating around 4,500 special school places. Hampshire submitted bids for two new Special Schools as part of this programme:
  - 125-place, co-educational, 8-16 yrs. SEMH (Social, Emotional & Mental Health) School in Boorley Green, Eastleigh
  - 125-place, co-educational, 4-16 yrs. SLD (Severe Learning Difficulty) School in Whiteley, Winchester
20. In March 2023, the DfE confirmed that Hampshire had been provisionally successful in its bid for the SLD school at Whiteley. The County Council is working closely with the DfE to agree the design, programme, and funding agreements. The County Council will make the land available on a long-term lease, with the DfE funding the capital costs of the school, estimated to be over £15m.
21. Subject to DfE processes, it is hoped that the new SLD school will open for September 2026. The planned SEMH school which will be funded from the capital programme is working to the same timeline. Further details on both SEND schools will be brought to future Decision Days.

### **School Suitability Investment Programme**

22. The focus of capital investment in recent years has been on basic need and capital maintenance. However, it is recognised that some buildings are now in need of significant suitability investment that is beyond individual school budgets. Resources of £5m (including fees) were allocated over a three-year programme of investment to ensure facilities are fit for purpose and continue to provide good quality learning environments. Following the success of this programme, further resources of £6m have been allocated over the period 2023/24 to 2025/26 at £2m per year.
23. Projects from the 2023/24 – 2025/26 allocation have been identified in Primary, Secondary and Special schools within three key areas:

- Improvements to school facilities, such as refurbishment of science laboratories.
- Reconfiguration and accessibility work at Special Schools to better meet current curriculum delivery and learning requirements for all pupils.
- Environmental improvements to the function of ventilation and acoustics of school facilities.

24. The first tranche of projects in 2023/24 and 2024/25 was reported on 12 January 2023 and focused on improving specialist areas and special school environments. The second tranche of projects in 2025/26 will continue the focus on improving school environments. Projects identified for 2023/24 and 2024/25 are detailed for approval in Appendix 6.

### **School Rebuilding Programme**

25. In December 2023, the DfE announced details of those schools that have provisionally been successful in selection for the DfE’s School Rebuilding Programme (SRP). Hampshire was successful with seven of its schools: 3 Primary Schools, 2 Secondary Schools and 2 Special Schools which are listed below.

- Horndean CE Junior School,
- Marchwood CE Infant School,
- Orchard Lea Infant School,
- Cranbourne Secondary School, Basingstoke,
- The Hurst Secondary School,
- Baycroft Special School,
- Lakeside Special School.

26. Officers are working closely with the DfE, and further updates will be provided as the individual schemes develop.

### **Revised Capital Programme 2022/23**

27. Following the approval to carry forward resources by the County Council at its meeting on 23 February 2023 and other programme amendments, the revised cash limit for the programme is shown in Table 1.

<b>Table 1 - Revised 2022/23 Cash Limit</b>	<b>£'000</b>
Cash Limit reported 12 January 2023	47,339
Removal of DfE Grant – Swanwick Lodge	-394
Cash Limit transfer – Cedar House	176
Projects and resources carried forward to 2023/24	-19,330
<b>Totals</b>	<b>27,791</b>

## Carry Forward from 2022/23

28. A total of £51.341m will be carried forward in to 2023/24. This includes resources and projects (totalling £32.011m) from the updated 2022/23 capital programme which was approved on 12 January 2023. Of the £19.33m resources carried forward, £9.209m is already committed, £5m is being carried forward to support future years programmes and £5.121m is being added to contingency.
29. Following the amendments in Table 2, the contingency figure for the programme is £8.389m. Given the overall value of the programme and continuing inflationary pressures, this is considered a prudent sum. A detailed breakdown of these projects and allocations is attached at Appendix 2.

<b>Table 2 - Revised 2023/24 Cash Limit</b>	<b>£'000</b>
Cash Limit reported 12 January 2023	34,437
Carry forward of resources to 2024/25	-5,000
DfE Grant – Swanwick Lodge Secure Children’s Home	787
DfE Grant – Hayter House new Children’s Home	110
DfE Grant – reduction in Devolved Formula Capital grant	-16
Arts Council England Grant – Bridgemy Library	150
Cash limit transfer – Bridgemy Library	35
Louisberg Barracks (Bordon Infant & Junior) developer contribution	900
East of Will Hall Farm (Butts Primary) developer contribution	100
Brislands Lane (Four Marks CE Primary) developer contribution	300
Beech Tree Close (Oakley Infant) developer contribution	80
Caesars Way (Whitchurch CE Primary) developer contribution	100
Project deferrals from 2022/23	19,330
<b>Totals</b>	<b>51,313</b>

## Amendments to the 2023/24 Capital Programme

### Bordon Infant & Junior School, Bordon

30. The proposed 1fe expansion of the Bordon Infant and Junior school was previously reported at £4.3m (including fees) on 12 January 2023.

31. Detailed design work and industry engagement has indicated that the scheme is likely to be more expensive than originally anticipated. This is due to continuing inflation on both materials and labour in the construction sector, particularly in mechanical and engineering costs. The scheme is now expected to cost £5.2m (including fees), an increase of £0.9m.
32. Therefore, it is recommended that resources of £0.9m are added to the 2023/24 capital programme.

#### Bridgemary Library, Gosport

33. The Arts Council England has awarded Hampshire County Council a grant of £0.150m to convert Bridgemary Library, Gosport into an 'Eco excellent library'. Children's Services has also allocated £0.035m of Cost of Change funding to support the project. The works will comprise installation of rooftop solar panels, an air source heat pump heating system and electric vehicle charging points. This flagship eco-friendly library will be fit to accommodate a significantly expanded programme of events and activities (and therefore income generation opportunities), welcome new audiences and incorporate new partnerships.
34. Therefore, it is recommended that resources of £0.185m are added to the 2023/24 capital programme.

#### **Amendments to the 2024/25 Capital Programme**

##### Alderwood School, Aldershot

35. The proposed 2fe expansion to Alderwood School was previously reported at £9.3m (including fees) on 12 January 2023. The £9.3m cost was at the 4Q22 price base. This cost has now been updated to the anticipated cost at the mid-point of construction.
36. Following consultation with the Environment Agency, the originally proposed expansion project was deemed unsuitable for the site. A new proposal has been developed but requires the demolition of an existing science block and the building of a new, larger block containing the demolished accommodation as well as the new accommodation over two floors. It will also provide for the refurbishment of all of the current science laboratories. The cost of the new scheme is expected to be £13m (including fees).
37. Therefore, it is proposed to add additional developer contribution resources of £1.0m (including fees) to the 2024/25 capital programme. The additional £2.7m (including fees) will be taken from the £5m of resources being transferred from 2023/24. As this is a variation over £2m it will be presented to County Council for approval.

##### Hounsome Fields Primary, Basingstoke

38. The proposed new 2fe primary school at Hounsome Fields, Basingstoke was previously reported at £13.3m (including fees) on 12 January 2023. The £13.3m cost was at the 4Q22 price base. This cost has now been updated to



the anticipated cost at the mid-point of construction.

39. Detailed design work and industry engagement has indicated that the scheme is likely to be more expensive than originally anticipated. This is due to continuing inflation on both materials and labour in the construction sector, particularly in mechanical and engineering costs. The scheme is now expected to cost £14.55m (including fees), an increase of £1.25m.
40. Therefore, it is proposed to add additional developer contribution resources of £1.25m (including fees) to the 2024/25 capital programme.
41. Following these adjustments, the 2024/25 Capital Programme cash limit is £107.941m as set out in Table 3 below.

<b>Table 3 - Revised 2024/25 Cash Limit</b>	<b>£'000</b>
Cash Limit reported 12 January 2023	100,691
Transfer of resources to 2024/25	5,000
Basingstoke Golf Course (Hounsome Fields Primary) developer contribution	1,250
AUE (Alderwood School) developer contribution	1,000
<b>Total</b>	<b>107,941</b>

### **Access Improvements in Schools**

42. As in previous years, funding has been made available to fund access improvements to mainstream schools, both at a pupil-led and strategic level. Therefore, it is recommended that the projects listed at Appendix 4 are approved from the capital programme for 2023/24.

### **Modular Classrooms**

43. The use of high-quality modular buildings can be a solution for some accommodation pressures. Such buildings are relatively quick to install and provide for a good quality learning environment, meeting the most recent building regulations. For some schools, modular classrooms may be the only expansion solution, whilst others may find a mixture of both permanent and modular accommodation.
44. Details of the location of planned modular buildings required for September 2023 are listed for information in Appendix 3. In some cases, the units will be rented due to the shorter-term requirement, whilst others will be purchased recognising a longer-term pressure in those locations. In both cases, the movement of existing owned modular buildings will also be considered. The sites currently listed in Appendix 3 may need to be updated following pupil data received later in the academic year. The actual needs of sites will be determined following receipt of updated information on pupil places required for the September 2023 intakes. It is recommended that approval be given to the Director of Children's Services to determine those sites that require

modular buildings for the 2023/24 academic year.

45. The rental of new units and movement of existing owned modular buildings between sites to meet future pupil demand is expected to cost in the region of £1.1 million. The purchase of new units to meet longer term needs is expected to cost in the region of £2 million. It is recommended that approval be given to the Director of Children's Services to allocate £1.1m of identified Dedicated Schools Grant (DSG) revenue funding to support the short-term hire and relocation of existing modular buildings. It is also recommended that approval be given to the Director of Children's Services to allocate £2m to those sites that have been determined as requiring the purchase of new modular buildings.

#### **Action taken by the Director of Children's Services**

46. Under delegated powers and following consultation with the Executive Member for Children's Services, the actions set out in Appendix 5 have been taken and it is recommended that these approvals are noted.

#### **Climate Change Impact Assessment**

47. A Climate Change Impact Assessment is not applicable to this decision report as it relates to the overall capital programme and is therefore strategic in nature. The major individual projects contained within this report will be subject to individual project appraisals which will cover climate change impact assessment requirements.

**REQUIRED CORPORATE AND LEGAL INFORMATION:**

**Links to the Strategic Plan**

<b>Hampshire maintains strong and sustainable economic growth and prosperity:</b>	Yes
<b>People in Hampshire live safe, healthy and independent lives:</b>	Yes
<b>People in Hampshire enjoy a rich and diverse environment:</b>	Yes
<b>People in Hampshire enjoy being part of strong, inclusive communities:</b>	Yes

**Other Significant Links**

<b>Links to previous Member decisions:</b>	
<u>Title</u>	<u>Date</u>
<b>Direct links to specific legislation or Government Directives</b>	
<u>Title</u>	<u>Date</u>

<b>Section 100 D - Local Government Act 1972 - background documents</b>	
<p>The following documents discuss facts or matters on which this report, or an important part of it, is based and have been relied upon to a material extent in the preparation of this report. (NB: the list excludes published works and any documents which disclose exempt or confidential information as defined in the Act.)</p>	
<u>Document</u>	<u>Location</u>
None	

## **EQUALITIES IMPACT ASSESSMENT:**

### **1. Equality Duty**

The County Council has a duty under Section 149 of the Equality Act 2010 ('the Act') to have due regard in the exercise of its functions to the need to:

- Eliminate discrimination, harassment and victimisation and any other conduct prohibited by or under the Act with regard to the protected characteristics as set out in section 4 of the Act (age, disability, gender reassignment, marriage and civil partnership, pregnancy and maternity, race, religion or belief, sex and sexual orientation);
- Advance equality of opportunity between persons who share a relevant protected characteristic within section 149(7) of the Act (age, disability, gender reassignment, pregnancy and maternity, race, religion or belief, sex and sexual orientation) and those who do not share it;
- Foster good relations between persons who share a relevant protected characteristic within section 149(7) of the Act (see above) and persons who do not share it.

Due regard in this context involves having due regard in particular to:

- The need to remove or minimise disadvantages suffered by persons sharing a relevant protected characteristic that are connected to that characteristic;
- Take steps to meet the needs of persons sharing a relevant protected characteristic that are different from the needs of persons who do not share it;
- Encourage persons sharing a relevant protected characteristic to participate in public life or in any other activity in which participation by such persons is disproportionately low.

### **2. Equalities Impact Assessment:**

Equality and diversity objectives will be considered on an individual project basis by conducting Equality Impact Assessments and are not considered at this stage or within this report.

## Revised Children's Services Capital Programme 2023/24

Category	Project	Estimated Starts Value £'000
<b>Primary School Projects</b>	Bordon Infant & Junior, East Hants	5,200
	Castle Hill Primary, Basingstoke	245
	Denmead Junior School, Havant	700
	Four Marks CE Primary, Alton	200
	Liphook Infant & Junior, East Hants	1,300
	Little Deer's Day Nursery, Burley	700
	Oakley Infant & Junior, Basingstoke	300
	Park View Primary, Basingstoke	800
	Poulner Infant, Ringwood	950
	Sharps Copse Primary, Havant	1,850
<b>Secondary School Projects</b>	Bohunt School, Liphook	243
	Romsey School, Romsey	583
	Winton Academy, Andover	5,600
	Wyvern College, Fair Oak	568
<b>Special Schools &amp; Resourced Provision</b>	Guillemont Junior, Farnborough	940
	Lakeside School, Chandlers Ford	750
	Special School Improvements	2,505
<b>Special High Needs Grant</b>	Special High Needs Grant	675
	Henry Tyndale School Satellite@ Former Park Children's Centre, Aldershot	2,250
	Morelands Primary, Havant	230
	St Jude's RC Primary, Fareham	270
<b>SEND Grant</b>	Post 16 Resourced Provisions	1,101
	SEND Grant Improvements	60
<b>Other Improvement Projects</b>	School Suitability Programme	2,590
<b>Library Improvement Projects</b>	Bridgemaury Library, Gosport	185
<b>Block Votes</b>	Access Improvements in Schools	807
	Early Years/Childcare Efficiency	1,600
	Furniture & Equipment	250
	Health & Safety	400
	Healthy Pupils Capital Fund	87
	Minor Works	717
	Modular Classroom Replacement	2,000

Category	Project	Estimated Starts Value £'000
	Projects Funded by Developer Contributions	815
	Schools' Devolved Formula Capital (DFC)	3,338
	Contingency	8,379
<b>Children's Social Care</b>	Foster Carers	778
	Adaptation Equipment	250
	New Children's Home – Hockley House, Romsey	310
	Swanwick Lodge	787
	<b>Total</b>	<b>51,313</b>

### Children's Services Capital Resources 2023/24

	£'000	£'000
Cash Limit reported 12 January 2023		34,437
Project deferrals from 2022/23	19,330	
Transfer of resources to 2024/25	-5,000	
DfE Grant – Swanwick Lodge	787	
DfE Grant – Hockley House	110	
DfE – Increase to DFC Grant	-16	
Arts Council England Grant	150	
Cash Limit transfer – Bridgemaury Library	35	
Louisberg Barracks (Bordon Infant & Junior) developer contribution	900	
East of Will Hall Farm (Butts Primary) developer contribution	100	
Brislands Lane (Four Marks CE Primary developer contribution	300	
Caesars Way (Whitchurch CE Primary) developer contribution	100	
Beech Tree Close (Oakley Infant) developer contribution	80	
<b>Total Resources</b>		<b>51,313</b>

Social Care	Project	Funding Source	Year	£'000
Basingstoke Area	Ground floor adaptations	Social Care	2023/24	40

<b>Social Care</b>	<b>Project</b>	<b>Funding Source</b>	<b>Year</b>	<b>£'000</b>
Basingstoke Area	2 storey extension	Social Care	2023/24	275
Eastleigh Area	Loft conversion	Social Care	2023/24	10
Eastleigh Area	2 storey extension	Social Care	2023/24	160
Fareham Area	2 storey side extension	Social Care	2023/24	40
Fareham Area	First floor adaptations	Social Care	2023/24	30
Havant Area	First floor adaptations	Social Care	2023/24	10
New Forest Area	Ground floor adaptations	Social Care	2023/24	30
	<b>Total</b>			<b>595</b>

This page is intentionally left blank



## Capital Programme 2022/23

## Schemes Not Started by 31 March 2023 – To Be Carried Forward to 2023/24

Scheme	Value £'000	Anticipated Start Date	Reasons for deferral and Re-scheduling
Castle Hill Primary, Basingstoke	245	July 2023	Finalisation of detailed design
Poulner Infant, Ringwood	870	July 2023	Finalisation of detailed design
Bohunt Academy, Liphook	243	July 2023	Finalisation of detailed design
Wyvern Academy, Eastleigh	568	July 2023	Finalisation of detailed design
Henry Tyndale satellite at former Park Children's Centre, Aldershot	2,250	July 2023	Finalisation of detailed design
Special High Needs Grant	675	Various	Specifications being finalised for named projects
SEND Grant (Including Post-16 College Grants)	1,161	Various	Finalisation of detailed design
Special School Improvements	1,505	Various	Specifications being finalised for named projects
Minor Works	295	July 2023	Specifications being finalised for named projects
School Suitability Programme	590	Various	Specifications being finalised for named projects
Health & Safety	328	Various	Projects planned during 2023
Furniture and Equipment*	192	Various	Planned F&E for future named projects
Healthy Pupils Capital Fund*	87	Various	Specifications being finalised for named projects
Modular Classroom replacement	1,540	Various	Projects planned during 2023 to meet increasing demand
Access Improvements in Schools*	307	Various	Projects planned during 2023
Foster Carers	278	Various	Projects being planned during 2023
Projects Funded by Developer Contributions	135	Various	Projects being planned during 2023
Contingency	8,061	Various	Inflation and abnormal costs
<b>Total</b>	<b>19,330</b>		

Note: \*Schemes controlled on an expenditure basis.

This page is intentionally left blank

## New Modular Classrooms 2023/24

School	NCA October 2022	Actual NOR October 2022	Forecast NOR January 2026	Cost £'000	Requirement
Baycroft School, Fareham	118	185	185	490	Purchase – New double unit to provide additional accommodation for existing pupil numbers.
Brookfield School, Fareham	1,800	1,803	1,951	400	Purchase – New double unit to provide additional accommodation.
Costello School, Basingstoke	1,120	1,203	1,277	450	HCC Owned – Installation of double unit from Velmead Junior to provide additional accommodation.
Four Lanes Junior, Basingstoke	-	-	-	70	HCC Owned – Removal of owned single unit and reinstatement of grounds.
Harrow Way School, Andover	977	985	1,000	50	Purchase – New modular building to provide additional accommodation
Talavera Junior, Aldershot	420	416	446	185	HCC Owned – Installation of single unit from Four Lanes Junior to provide additional accommodation.
Velmead Junior, Fleet	-	-	-	100	HCC Owned – Removal of owned double unit from Velmead Junior and reinstatement of grounds.
Winton Academy, Andover	930	935	1,164	305	Hired – Double unit to provide additional accommodation whilst permanent expansion works are being completed.
<b>Total</b>				<b>2,050</b>	

This page is intentionally left blank

**Access Improvements in Schools – proposed works for 2023/24**

<b>Resources</b>	<b>£000's</b>
Allocation 2023/24	500
Balance c/fwd 2022/23	0
<b>Total</b>	<b>500</b>

<b>School</b>	<b>Project</b>	<b>Cost £'000</b>
Applemore College, Totton	Hygiene room improvements	8
Crofton Academy, Fareham	Internal access improvements	200
Great Binfields Primary, Basingstoke	Hygiene room improvements	8
Kempshott Infant, Basingstoke	Internal door thresholds	10
Oakley Junior, Basingstoke	New accessible toilet	45
Ropley CE Primary, Alresford	Hygiene room improvements	8
<b>Total</b>		<b>279</b>

Note: Schemes controlled on an expenditure basis

This page is intentionally left blank

## Actions by Director of Children's Services

School	Project	Funding Source	Year	Cost £'000
Bedenham Primary, Gosport	New SEMH resource provision	SEN	2023/24	55
Brockhurst Primary, Gosport	Health & Safety improvements	Health & Safety	2023/24	15
The Butts Primary, Alton	New family support centre	Developer Contribution	2023/24	100
Cranbourne School, Basingstoke	New toilet provision	Minor Works	2023/24	71
Four Marks Primary, Alton	Toilet improvements	Developer Contribution	2023/24	100
Four Marks Primary, Alton	New windows	Developer Contribution	2023/24	200
Gomer Infant, Gosport	Security improvements	Health & Safety	2023/24	35
Harewood primary Behaviour Service, Basingstoke	Internal improvements	Minor Works	2023/24	20
Henry Tyndale School, Farnborough	Pedestrian improvements	SEN	2023/24	50
Hockley House, Romsey	New children's home	Capital Receipt	2023/24	200
Icknield School, Andover	Major refurbishment	SEN	2022/23	100
Lakeside School, Eastleigh	Toilet improvements	SEN	2023/24	110
Oakley Infant, Basingstoke	Playground improvements	Developer Contribution	2023/24	80
Rowhill School, Aldershot	New internal doors	Minor Works	2022/23	26
Samuel Cody Specialist Sports College, Farnborough	New hygiene room	SEN	2023/24	50
Sharps Copse Family Centre, Havant	Playground and pathway improvements	Minor Works	2023/24	50
St Bede's CE Primary, Winchester	Security improvements	Health & Safety	2023/24	20
Swanwick Lodge Secure Children's Home, Fareham	New perimeter fence	Capital receipt	2023/24	75
Whitchurch CE Primary, Basingstoke	New toilet provision	Developer Contribution	2023/24	100
Winton Academy, Andover	New MUGA	Basic Need	2022/23	255
<b>Total</b>				<b>1,712</b>

This page is intentionally left blank



## School Suitability Programme 2023/24 & 2024/25

School	Project	Year	Cost £'000
Roman Way Primary, Andover	Teaching space improvements	2022/23	415
Crookhorn College, Waterlooville	Science Laboratory (2)	2023/24	325
The Hamble School, Hamble	Science Laboratory (2)	2023/24	325
Baycroft Special School, Fareham	School Improvements	2023/24	300
Forest Park Special School, Totton	School Improvements	2023/24	350
Glenwood Special School, Emsworth	School Improvements	2023/24	480
Alderwood School, Aldershot	Science Laboratory (4)	2024/25	665
Brighton Hill Community School, Basingstoke	Science Laboratory	2024/25	175
Frogmore Community College, Yateley	Science Laboratory	2024/25	175
Harrow Way Community School, Andover	Science Laboratory (2)	2024/25	340
<b>Total</b>			<b>3,550</b>

This page is intentionally left blank

## HAMPSHIRE COUNTY COUNCIL

### Decision Report

<b>Decision Maker:</b>	Executive Lead Member for Children's Services
<b>Date:</b>	11 July 2023
<b>Title:</b>	Children's Services Procurement – Approval to Spend [HIEP]
<b>Report From:</b>	Director of Children's Services

**Contact name:** Julian Radcliffe, Head of Hampshire and Isle of Wight Educational Psychology (HIEP)

**Tel:** Via Teams

**Email:** Julian.Radcliffe@hants.gov.uk

#### Purpose of this Report

1. The purpose of this report is to seek approval to spend in relation to the commissioning of locum educational psychologists (EPs) to support the production of Education, Health and Care Plans (EHCPs).
2. This report seeks to:
  - Give relevant information on the planned procurement activity for this service;
  - Give information on the value and council spend in relation to this service;
  - Request approval to spend in line with the Council's Contract Standing Orders.

#### Recommendation(s)

3. It is recommended that the Executive Lead Member for Children's Services gives approval to spend for the commissioning of locum EPs up to the value of £3,348,000 over a five year period.

#### Executive Summary

4. This report seeks to:
  - set out the background to the procurement need;
  - consider the finance for the project and the impact on the budget;
  - detail the contractual spend;
  - highlight the impact the project has made on the performance of the County Council and
  - recommend approval.

## **Contextual information**

5. Hampshire and Isle of Wight Educational Psychology (HIEP) provides psychological advice as an input into the production of Education, Health and Care Plans (EHCPs) as part of its statutory responsibilities.
6. The average demand for input into EHCPs per month has risen from just under 150 per month in 2019 to 225 written advice per month in 2022, with increased demand expected in 2023 and beyond.
7. There is a national shortage of EPs and only a limited number are trained each year. The locum market is limited, and few providers are able to provide in bulk. The market rate for locum EPs has increased in recent years, and currently stands at around £1,100 to £1,200 per written advice.
8. It is not possible to recruit enough EPs to the service, due to the above national shortage, and the service is reliant on the use of locum EPs, who typically provide psychological advice remotely to meet increased statutory demand.
9. Expenditure on locum EPs within the service over the past three years has been: £1,558K (22/23), £991K (21/22) and £789K (20/21).

## **Finance**

10. The service has recently received an increase to its base budget of £1.66m to address historic deficit positions resulting from increased statutory demand. This led to the service pulling back from sold service work, which is preventative in nature and generates revenue.
11. This increase to the base budget allows for the funding of locum EPs to produce advice in lieu of being able to employ EPs directly.
12. Council officers will commission locum EP services through a compliant procurement route. The maximum value for the contract under a three-year framework is £2,008,800 and with the option to extend a further two years, with a total cost of £3,348,000.

## **Performance**

13. Performance will be measured against both agreed monthly advice submitted (output), and the timeliness of output in line with statutory requirements for a 6 week turnaround in psychological advice.
14. The historic use of locum EPs has enabled both the service, and the Special Education Needs (SEN) Service to increase the number of advices produced within statutory requirements from around 2% to above 50%.

## **Consultation and Equalities**

15. There are very clear benefits to the procurement of additional EP capacity (locum or otherwise). These include timely output of EHCPs, which ensures children's needs are met at the earliest opportunity and within statutory timescales. As a consequence, no consultation has been undertaken.
16. An Equality Impact Assessment has been completed for this recommendation.

## **Climate Change Impact Assessment**

17. Climate Change. Hampshire County Council utilises two decision-making tools to assess the carbon emissions and resilience impacts of its projects and decisions. These tools provide a clear, robust, and transparent way of assessing how projects, policies and initiatives contribute towards the County Council's climate change targets of being carbon neutral and resilient to the impacts of a 2°C temperature rise by 2050. This process ensures that climate change considerations are built into everything the Authority does. The carbon mitigation tool and climate change adaptation tool were both considered but were deemed not applicable to this report because the projects detailed within will not have a carbon emissions impact and are not vulnerable to climate change.

## **Conclusions**

18. It is recommended that the Executive Lead Member for Children's Services gives approval to spend for the commissioning of locum EPs to the value of £3,348,000 over a five year period.

**REQUIRED CORPORATE AND LEGAL INFORMATION:**

**Links to the Strategic Plan**

<b>Hampshire maintains strong and sustainable economic growth and prosperity:</b>	No
<b>People in Hampshire live safe, healthy and independent lives:</b>	Yes
<b>People in Hampshire enjoy a rich and diverse environment:</b>	No
<b>People in Hampshire enjoy being part of strong, inclusive communities:</b>	Yes

<b>Section 100 D - Local Government Act 1972 - background documents</b>	
<p>The following documents discuss facts or matters on which this report, or an important part of it, is based and have been relied upon to a material extent in the preparation of this report. (NB: the list excludes published works and any documents which disclose exempt or confidential information as defined in the Act.)</p>	
<u>Document</u>	<u>Location</u>
None	

## **EQUALITIES IMPACT ASSESSMENT:**

### **1. Equality Duty**

The County Council has a duty under Section 149 of the Equality Act 2010 ('the Act') to have due regard in the exercise of its functions to the need to:

- Eliminate discrimination, harassment and victimisation and any other conduct prohibited by or under the Act with regard to the protected characteristics as set out in section 4 of the Act (age, disability, gender reassignment, marriage and civil partnership, pregnancy and maternity, race, religion or belief, sex and sexual orientation);
- Advance equality of opportunity between persons who share a relevant protected characteristic within section 149(7) of the Act (age, disability, gender reassignment, pregnancy and maternity, race, religion or belief, sex and sexual orientation) and those who do not share it;
- Foster good relations between persons who share a relevant protected characteristic within section 149(7) of the Act (see above) and persons who do not share it.

Due regard in this context involves having due regard in particular to:

- The need to remove or minimise disadvantages suffered by persons sharing a relevant protected characteristic that are connected to that characteristic;
- Take steps to meet the needs of persons sharing a relevant protected characteristic that are different from the needs of persons who do not share it;
- Encourage persons sharing a relevant protected characteristic to participate in public life or in any other activity in which participation by such persons is disproportionately low.

### **2. Equalities Impact Assessment:**

The Equalities Impact Assessment (EIA) is included as a separate attachment.

This page is intentionally left blank





## Equality Impact Assessment

### What is an Equality Impact Assessment (EIA) and why does the County Council do them?

The [Public Sector Equality Duty](#) (PSED) is an obligation within the [Equality Act 2010](#) ("the Act"), which asks public authorities, like Hampshire County Council, to give 'due regard' to equality considerations, in particular to:

- Eliminate unlawful discrimination, harassment and victimisation and other conduct prohibited by the Act.
- Advance equality of opportunity between people who share a protected characteristic and those who do not.
- Foster good relations between people who share a protected characteristic and those who do not.

This includes assessing the impact of policies and practices on individuals and communities with a protected characteristic, as defined in the Act and some other specific groups. The County Council uses EIAs to ensure it has paid 'due regard' to equalities considerations when there are changes to a service or policy, a new project or certain decisions.

EIA author	Position & Department	Contact
Jonathan Price	Business Support Manager Children's Services	jonathan.price3@hants.gov.uk Tel:TBA

Title:	Extension of contract to procure locum Education Psychologists through YPO Framework
Related EIAs:	None

EIA for Savings Programme:	No
Service affected	Hampshire and Isle of Wight Educational Psychology
Description of the service/policy/project/project phase	<p>Educational Psychologists (EPs) work with children, families, and schools. They use their knowledge of psychology and research to support with learning and other areas, such as how children feel, behave, and get on with others. Hampshire and Isle of Wight Educational Psychology (HIEP) provides psychological advice as an input into the production of Education, Health and Care Plans (EHCPs) as part of its statutory responsibilities. These EHCPs are a product of the Special Educational Needs (SEN) department, and aim to provide a plan, and additional resources to help children and young people aged up to 25 whose needs can not be met under the normal provision that schools are responsible for providing. The average demand for input into EHCPs per month has risen from just under 150 per month in 2019 to 225 advices per month in 2023 with increased demand expected to continue in the near future. There is a national shortage of Education Psychologists and only a limited number are trained each year. The locum market is tight, and few providers are able to provide in bulk. It is not possible to recruit enough Education Psychologists to the service, due to the above national shortage and the service is reliant on the use of locum Education Psychologists, who offer additional capacity to help meet the increased statutory demand. The historic use of locum EPs has enabled both the service, and Special Educational Needs (SEN) to increase the number of advices produced within statutory requirements (20 weeks from date of request) from around 2% to above 50%. This Equality Impact Assessment supports a request to extend and expand an existing contract for the supply of locum EPs to help meet statutory demand. For additional context, the service also engages in sold services - it operates around 60 different sold services, that are commissioned by around 20 different services and organisations. You can find our Education Psychologists in a wide range of places – most frequently educational settings, but also areas such as Coroner's and Mental Health Support Teams.</p>
New/changed service/policy/project	<p>It is proposed to extend and expand an existing contract, procured under the YPO Framework for the provision of locum EPs to provide input in to EHCPs to enable the service to better meet increasing statutory demand.</p>

## Engagement

No engagement or consultation with service users has taken place as this is related to continuing an existing provision through an agency provider in a procurement compliant manner.

## Equalities considerations - Impact Assessment

### Age

Impact on public	Positive
Impact on staff	Neutral
Rationale	The use of locum Education Psychologists enables improved 'timeliness' in the turnaround of Education, Health and Care Plans (EHCP), these are aimed at providing additional support to young people aged 0 - 25 whose needs can not currently be met under the normal SEN provision with a school.
Mitigation	

### Disability

Impact on public	Positive
Impact on staff	Neutral
Rationale	The use of locum Education Psychologists enables improved 'timeliness' in the turnaround

	of Education, Health and Care Plans (EHCP), these are aimed at providing additional support to young people whose needs can not currently be met under the normal SEN provision with a school.
Mitigation	

### Gender Reassignment

Impact on public	Neutral
Impact on staff	Neutral
Rationale	There will be no change in benefits to this protected characteristic group, over and above the current circumstances and over other protected characteristics groups, therefore the impact has been assessed as neutral for both staff and public.
Mitigation	

### Pregnancy and Maternity

Impact on public	Neutral
Impact on staff	Neutral
Rationale	There will be no change in benefits to this protected characteristic group, over and above the current circumstances and over other protected characteristics groups, therefore the impact has been assessed as neutral for both staff and public.
Mitigation	<b>Page 36</b>

## Race

Impact on public	Neutral
Impact on staff	Neutral
Rationale	There will be no change in benefits to this protected characteristic group, over and above the current circumstances and over other protected characteristics groups, therefore the impact has been assessed as neutral for both staff and public.
Mitigation	

## Religion or Belief

Impact on public	Neutral
Impact on staff	Neutral
Rationale	There will be no change in benefits to this protected characteristic group, over and above the current circumstances and over other protected characteristics groups, therefore the impact has been assessed as neutral for both staff and public.
Mitigation	

## Sex

Impact on public	Neutral
Impact on staff	Neutral

Rationale	There will be no change in benefits to this protected characteristic group, over and above the current circumstances and over other protected characteristics groups, therefore the impact has been assessed as neutral for both staff and public.
Mitigation	

## Sexual Orientation

Impact on public	Neutral
Impact on staff	Neutral
Rationale	There will be no change in benefits to this protected characteristic group, over and above the current circumstances and over other protected characteristics groups, therefore the impact has been assessed as neutral for both staff and public.
Mitigation	

## Marriage and Civil Partnership

Impact on public	Neutral
Impact on staff	Neutral
Rationale	There will be no change in benefits to this protected characteristic group, over and above the current circumstances and over other protected characteristics groups, therefore the impact has been assessed as neutral for both staff and public.
Mitigation	Page 38

## Poverty

Impact on public	Neutral
Impact on staff	Neutral
Rationale	There will be no change in benefits to this protected characteristic group, over and above the current circumstances and over other protected characteristics groups, therefore the impact has been assessed as neutral for both staff and public.
Mitigation	

## Rurality

Impact on public	Neutral
Impact on staff	Neutral
Rationale	There will be no change in benefits to this protected characteristic group, over and above the current circumstances and over other protected characteristics groups, therefore the impact has been assessed as neutral for both staff and public.
Mitigation	

Geographical Impact:All Hampshire

## Equality Statement

Additional information:

This EIA principally focusses on the impacts to the public due to the nature of the proposal - with service users being the main beneficiary, therefore the impacts for staff have been assessed as neutral throughout. There are not proposed changes to staff working terms and conditions or processes as a result of this proposal.

Decision day meeting - 21/06/23.

## Overview Statement:

A summary assessment to show that due regard to the Public Sector Equality Duty has been paid, which is undertaken when a full EIA is not needed:

EIA reference number: 00402

Date of production of EIA for publication: 05/06/2023



## HAMPSHIRE COUNTY COUNCIL

### Decision Report

<b>Decision Maker:</b>	Executive Lead Member for Children's Services
<b>Date:</b>	11 July 2023
<b>Title:</b>	Barncroft Primary School Age Range
<b>Report From:</b>	Director of Children's Services

**Contact name:** Tracey Messer- Service Manager Childcare Development

**Tel:** 01962 847070

**Email:** Tracey.messer@hants.gov.uk

### Purpose of this Report

1. The purpose of this report is to provide feedback on the statutory public notice in relation to the proposal for Barncroft Primary School to lower their age range and take children from age 2 years old and deliver nursery provision from 8.50am to 3.10pm.
2. This report seeks approval for the age range of the school to be lowered.

### Recommendation(s)

3. That approval be given to the following proposals, published by Hampshire County Council under Section 19 (1) of the Education and Inspections Act 2006:
  - To make a prescribed alteration to Barncroft Primary School, Park Lane, Bedhampton, Havant PO9 3HN, to provide nursery provision for up to 24 places for children from 2 years old, with effect from 1 September 2023, with a requirement to consult with the Council prior to any further expansion of places.

### Executive Summary

4. This report outlines the rationale, background and outcome of the Public Notice to the request to lower the age range for Barncroft Primary School.
5. Barncroft Primary School is a community school currently approved to take children of school age from Year R to Year 6. The Published Admission Number (PAN) for the school is currently 60 with a capacity of 420. The governing body of the school is seeking to:
  - (a) Lower the age range to 2-years old; and
  - (b) Directly manage a new early years' facility as part of the school.

6. The Barncroft Primary School proposal is for the governing body of the school to take on the management of Barn Owls preschool, currently operated by the YMCA, which is on the school site and will deliver 24 preschool places for children aged 2,3 and 4 years old.
7. The current Barn Owls delivery is in a separate building on the site of Barncroft Primary School, specifically designed for preschool care.
8. The school leadership team has reviewed its management, financial and operational arrangements, and the governors at its meeting on 10 November 2022 gave full agreement to the proposal.
9. There is no cost to Hampshire County Council associated with this proposal.
10. A public consultation was held from 12 May to 16 June 2023.
11. No objections were raised from the consultation.
12. A copy of the Public Notice is appended (Appendix 1). The County Council has complied with all statutory requirements relating to the publication of the Public Notice.

#### **STATUTORY PUBLIC CONSULTATION**

13. *The Making Significant Changes ('prescribed alterations') to Maintained Schools* (publishing.service.gov.uk) guidance sets out the process to be followed.
14. A Public Notice was published in the press on 12 May 2023 with the consultation period closing 16 June 2023.

#### **Contextual information**

15. The Barn Owls preschool is a YMCA managed facility. YMCA has been on a journey to divest a number of nursery/preschool they run and Barn Owls is one of these in Hampshire. YMCA used external agents to manage their divestment process to find alternative organisations to take on the management. The school expressed interest to them in taking on the running of the preschool as it was on their school site and YMCA has accepted.
16. Having a nursery managed by the school will not make Barncroft Primary School an all through school. Parents of children attending the nursery will still be required to apply for their place in Year R through the usual admission arrangements. There is scope for admission authorities to give priority in their oversubscription criteria to children eligible for early years pupil premium, the pupil premium or the service premium where these children: a) are in a preschool class which is part of the school; or b) attend a preschool that is established and run by the school. Likewise, admission authorities can give oversubscription priority for children attending an on-site school run nursery

or pre-school. However, neither of these criteria are adopted by Hampshire County Council for its community and voluntary controlled schools of which, Barncroft Primary School is one. Two schools, Eling Infant School and Brockenhurst CE Primary School, do have a school specific criterion relating to their on-site nursery, but these have been agreed by Hampshire's Admission Forum on an exceptional basis.

17. The Barncroft Primary School proposal to take on the management of the existing YMCA Barn Owls preschool supports the continuing need of early and childcare services in the Havant Leigh Park area and supports families from areas of deprivation.
18. The Small Area Population Forecast data (2023) estimates there will be a slight decline in the number of 0-4s in the Bedhampton Ward from 2023-2029 (4.76%). However, this is minimal, and it is anticipated that demand for 2 year old places may increase in light of the recent Government Spring Budget 2023 announcement relating to extending funded hours for children aged 2 of working parents who will be eligible to receive 15 hours of fund early years education April 2024 increasing to 30 hours from September 2025.
19. A review of the childcare population and take up of childcare in Bedhampton and surrounding areas of Leigh Park has confirmed a need for 24 places.

## **Finance**

20. The key to successful early years provision is the ability to be financially sustainable through the limitations of the early years' education funding, through setting appropriate parental fees for additional services together with allowable consumable charges. It is therefore important that both the school governing body and leadership team regularly review their business plans, financial forecasting and establish close monitoring of the income and expenditure with good debt management. It is also recommended that the income and expenditure of the proposed preschool is kept separate to the school's main budget.
21. Barncroft Primary School has undertaken its own due diligence and understands that the preschool income can only be met from early years education claims and parental fee income. At its meeting of 10 November 2022, the governing body approved the financial plans for the lowered age group. The governing body understands its financial responsibilities regarding this age range change and the budgetary requirements.
22. To support the process of taking on this early year's provision, the school have provided an outline business plan and financial projections. The school have indicated that the preschool income will support taking on the current YMCA staffing and running costs of the provision. The business plan states that finances have been drafted using a 70% occupancy rate which delivers a small surplus. The plan also indicates opportunities to be investigated by the

school to extend the childcare offer to meet the needs of working families.

23. The Barncroft Primary School has accessed support from HCC Education Finance Services to gain clarity in respect of school budget and budget planning for the proposed preschool provision and have indicated that the school have a prudent approach to their budgeting.

### **Human Resources Implications**

24. As Barncroft Primary School is proposing to take on an existing provision, there are TUPE implications, regarding 3 staff. The school has identified it can put in place appropriate staffing arrangements from September 2023 to support this proposal. The earliest date for transfer of staff is 21 June 2023.
25. The school is responsible for ensuring employment of appropriate staff for the nursery and have taken advice from schools HR support in considering this proposal.

### **Performance Impact**

26. Barncroft Primary School recognises that delivering an early year's provision will offer an early intervention approach to children with SEN and implement early support prior to children starting school, thus allowing a smooth transition with identified support in place for children who through the coordinated main round school admission process are offered a Year R place at the school.
27. The school is responsible for meeting all the regulatory requirements of the Statutory Framework for the Early Years Foundation Stage and any subsequent OFSTED inspection.

### **Consultation and Equalities**

28. Barncroft Primary School Informed other local provision and families of their intention to take over Barn Owls Pre-school, which is currently under the ownership of the YMCA. Barncroft Primary School also organised a Parent Meeting.
29. On 5 May 2023, a statutory four-week public consultation was approved in respect of this proposal which opened from 12 May to 16 June 2023.
30. Barncroft Primary School consulted with local stakeholders and has spoken to parents and directly with local childcare providers. During the Public Notice period Barncroft Primary School held a meeting with parents to launch the proposal. Discussions with the neighbouring preschool have been positive to the proposal of Barncroft Primary School going age downwards.
31. No objections were raised from the consultation.

32. As part of the consultation process, the school published a “statement of intent” publicising a consultation drop-in session on 18 May 2023. This statement went out to all the parents of Barncroft Primary School.
33. The School Admissions Team have no concerns with the proposal.
34. An Equalities Impact Assessment is attached to this report (Appendix 3). The proposal will provide inclusive access to early years education and therefore has a positive impact.

## **Conclusion**

35. Barncroft Primary School proposal is to take on management of Barn Owls preschool, which is an existing early years provision, currently operated by the YMCA. This proposal supports the continuation of early years education and childcare and supports the potential growth in demand for services. The school wish to manage this early years provision directly to provide teacher led early years’ service. As the school is a local authority community school, the local authority was required to approve a statutory consultation and Public Notice to be undertaken before any decision can be confirmed.

**REQUIRED CORPORATE AND LEGAL INFORMATION:**

**Links to the Strategic Plan**

<b>Hampshire maintains strong and sustainable economic growth and prosperity:</b>	Yes
<b>People in Hampshire live safe, healthy and independent lives:</b>	Yes
<b>People in Hampshire enjoy a rich and diverse environment:</b>	Yes
<b>People in Hampshire enjoy being part of strong, inclusive communities:</b>	Yes

**Other Significant Links**

<b>Links to previous Member decisions:</b>	
<u>Title</u>	<u>Date</u>
<b>Direct links to specific legislation or Government Directives</b>	
<u>Title</u>	<u>Date</u>
<a href="#">Making significant changes ('prescribed alterations') to maintained schools (publishing.service.gov.uk)</a>	<b>January 2023</b>

<b>Section 100 D - Local Government Act 1972 - background documents</b>	
<p>The following documents discuss facts or matters on which this report, or an important part of it, is based and have been relied upon to a material extent in the preparation of this report. (NB: the list excludes published works and any documents which disclose exempt or confidential information as defined in the Act.)</p>	
<u>Document</u>	<u>Location</u>
None	

## **EQUALITIES IMPACT ASSESSMENT:**

### **1. Equality Duty**

The County Council has a duty under Section 149 of the Equality Act 2010 ('the Act') to have due regard in the exercise of its functions to the need to:

- Eliminate discrimination, harassment and victimisation and any other conduct prohibited by or under the Act with regard to the protected characteristics as set out in section 4 of the Act (age, disability, gender reassignment, marriage and civil partnership, pregnancy and maternity, race, religion or belief, sex and sexual orientation);
- Advance equality of opportunity between persons who share a relevant protected characteristic within section 149(7) of the Act (age, disability, gender reassignment, pregnancy and maternity, race, religion or belief, sex and sexual orientation) and those who do not share it;
- Foster good relations between persons who share a relevant protected characteristic within section 149(7) of the Act (see above) and persons who do not share it.

Due regard in this context involves having due regard in particular to:

- The need to remove or minimise disadvantages suffered by persons sharing a relevant protected characteristic that are connected to that characteristic;
- Take steps to meet the needs of persons sharing a relevant protected characteristic that are different from the needs of persons who do not share it;
- Encourage persons sharing a relevant protected characteristic to participate in public life or in any other activity in which participation by such persons is disproportionately low.

### **2. Equalities Impact Assessment:**



EIA0415 - Barncroft  
Primary School lower

## CLIMATE CHANGE IMPACT ASSESSMENTS

Hampshire County Council utilises two decision-making tools to assess the carbon emissions and resilience impacts of its projects and decisions. These tools provide a clear, robust, and transparent way of assessing how projects, policies and initiatives contribute towards the County Council's climate change targets of being carbon neutral and resilient to the impacts of a 2°C temperature rise by 2050. This process ensures that climate change considerations are built into everything the Authority does.

The carbon mitigation tool and/or climate change adaptation tool were not applicable because the decision is an administrative change to the ownership and running of an existing childcare offer.



Barncroft Primary  
School - Reduction in



## HAMPSHIRE COUNTY COUNCIL

### Decision Report

<b>Decision Maker:</b>	Executive Member for Education
<b>Date:</b>	11 July 2023
<b>Title:</b>	Hounsome Fields Primary School, Basingstoke
<b>Report From:</b>	Director of Universal Services

**Contact names:** Colin Jackson, Senior Delivery Manager  
John Cantwell, Senior Delivery Manager

**Tel:** 0370 7796580      **Email:** colin.jackson@hants.gov.uk  
0370 7791723      john.cantwell@hants.gov.uk

#### Purpose of this Report

1. The purpose of this report is to seek spend approval to the project proposals for the proposed new Hounsome Fields Primary School at the total cost of £14,550,000.

#### Recommendation

2. That the Executive Member for Children's Services, grants spend approval to the project proposals for Hounsome Fields Primary School at the total cost of £14,550,000.

#### Executive Summary

3. The new Hounsome Fields Primary School will provide primary education for up to 420 children aged between 4 and 11 years old, together with a resource provision for 8 pupils with special educational needs.
4. The proposed new school is required to meet the anticipated demand for primary school places arising from new homes to be built in two residential developments at Hounsome Fields and Basingstoke Golf Course on the southwest of Basingstoke.
5. The site and funding for the new school is provided by developer contributions secured by the County Council via Section 106 Planning Agreements as part of the planning approval process for the two developments.
6. These contributions are sufficient to enable the project to be adopted as a Climate Change Primary School Pilot project, aiming to achieve three objectives: zero onsite direct carbon emissions, low embodied carbon in construction and improved resilience to overheating and flooding.

7. The school will be located in the northeast of the Hounsome Fields development, just west of the A30. The two-storey school comprises 14 classrooms, a special educational needs resource provision, a hall, studio, learning resource centre, kitchen and ancillary accommodation with hardstanding for informal play and play courts, a staff car park and playing fields.
8. The school is to be run by an academy, selected in a competitive process by the County Council and subject to approval from the Department for Education. The school is planned to open in September 2025.
9. The project is included in the update to the Children Services Capital Programme, approved by the Executive Lead Member for Children's Services Decision Day on 11 July 2023, with a budget of £14,550,000.
10. A planning application was submitted in February 2023 and a decision is anticipated in September 2023.

## **Background**

11. The proposed new school is required to meet the anticipated demand for primary school places arising from the approximately 1,750 new homes to be built in the residential developments at Hounsome Fields and the adjacent Basingstoke Golf Course on the southwest of Basingstoke.
12. The school will have 2 forms of entry, providing primary education for up to 420 children aged between 4 and 11 years old, together with a resource provision for 8 pupils with special educational needs.
13. The funding for the new school is provided by developer contributions secured by the County Council via Section 106 Planning Agreements as part of the planning approval process for the Hounsome Fields and Basingstoke Golf Course developments. The site for the new school is provided within the Hounsome Fields development.
14. The school is to be run by an academy selected in a competitive process by the County Council and subject to approval by the Department for Education. The school is planned to open in September 2025.
15. The project is included in the update to the Children Services Capital Programme, approved by the Executive Lead Member for Children's Services Decision Day on 11 July 2023, with a budget of £14,550,000.

## **Finance**

16. Capital Expenditure: The Capital Expenditure has already been approved in principle; the following table outlines the breakdown of its distribution across the project. The current estimate includes inflation to mid-point construction 4Q24.

<b>Capital Expenditure</b>	<b>Current Estimate £'000</b>	<b>Capital Programme £'000</b>
Buildings	12,489	12,489
Fees	2,061	2,061
<b>Total</b>	<b>14,550</b>	<b>14,550</b>

#### 17. Sources of Funding

<b>Financial Provision for Total Scheme</b>	<b>Buildings £'000</b>	<b>Fees £'000</b>	<b>Total Cost £'000</b>
1. From Own Resources			
a) Capital Programme (as above)	0	0	0
2. From Other Resources			
a) Developer's Contribution	12,489	2,061	14,550
<b>Total</b>	<b>12,489</b>	<b>2,061</b>	<b>14,550</b>

##### i. *Building Cost:*

Net Cost = £3,341/m<sup>2</sup> (excluding abnormals)

Gross Cost = £4,763/m<sup>2</sup>

Cost Per Pupil Place = £28,234

GIA: 2250m<sup>2</sup>

##### ii. *Furniture & Equipment:*

Included in the above figures is an allocation of £596,023 for the provision of all loose furniture, fittings, equipment and I.T. (inclusive of fees).

##### iii. *School Balances:*

N/A – New Academy

##### Revenue Issues:

##### iv. *Overview of Revenue Implications:*

There are no revenue implications to Hampshire County Council as academies receive their funding directly from the government and are managed by Academy Trusts.

### **Details of Site and Existing Infrastructure**

18. The site for the new school is in the north-east section of the Hounsomes Fields development, accessed off Treetop Avenue, a new road serving the residential development from a new roundabout on the A30. Previously farmland, the site falls approximately 9m from north-east to south-west, with the western edge bounded by woodland. The A30 runs directly adjacent to the east boundary, separated from the school site by a line of trees, an acoustic bund and fencing. New housing is located to the north beyond a

small public open space and the local centre serving the development is located to the south with further new housing beyond.

19. The school site is approximately 3.0 hectares, sufficient to accommodate an expansion of the school by a further form of entry (210 pupils) if necessary in the future.
20. Vehicular access to the school staff car park and service area is provided off Treetop Avenue at the northern end of the site. Grounds maintenance access to the playing fields is provided from Treetop Avenue in the south-west corner of the site.
21. The site is well connected to the homes within the Hounsome Field development with new footpaths and cycle ways, including a path from the northern end of the school site to the pedestrian crossing of the A30 at the light-controlled junction to the north-east. In due course, a further light-controlled at-grade pedestrian crossing of the A30 is to be constructed adjacent to the new roundabout to the south as part of the Basingstoke Golf Course development, linking pedestrian access from that development with the southern corner of the school site.
22. New services infrastructure will be provided to the site with sufficient capacity for the proposed accommodation, including a substation sized to facilitate the proposed ground-source heat pump heating system.

### **Scope of the Project**

23. The project comprises the construction of the school building, car parking, external play areas and playing fields.

### **The Proposed Building**

24. The proposed primary school building comprises:
  - Main hall
  - Studio
  - 14 classrooms
  - A classroom for pupils with special educational needs and disabilities
  - A specialist practical classroom
  - Group rooms
  - A learning resource centre
  - Staffroom and administration offices
  - Pupil and staff toilets
  - Accessible toilets and a hygiene room
  - Kitchen
  - Other ancillary support facilities
25. The school building is a two-storey rectangular compact form, with the hall, studio and kitchen located on the west end and the main elevations of

teaching accommodation facing north and south. A two-storey loggia provides shade and shelter to the south elevation and a further single storey canopy provides covered outside play areas to the ground floor classrooms on the north elevation.

26. The building will use an off-site manufactured timber frame construction to minimise embodied carbon, finished externally with brick and triple glazed aluminium/wood composite windows and doors. A high performance 'green' roof comprises extensive sedum planting to help protect the roof from solar gain and support biodiversity.

### **External Works**

27. The external works comprise:
- A hard play court and informal hard play areas
  - Dedicated play areas adjacent to reception classrooms, key stage 1 classrooms and the special educational needs resource provision.
  - Pedestrian footpaths from the public open space to the north and from Treetop Avenue leading to an entrance court at the front of the school.
  - A further pedestrian footpath from Treetop Avenue leading directly to the play area on the south elevation.
  - Two grassed playing fields
  - Soft landscaping, including new trees.
  - An all-weather footpath loop around the playing fields, linked to a further pedestrian access at the south-east corner of the site.
  - Car parking and service access area
  - Three covered bicycle and scooter storage areas.
  - Habitat areas, including a swale at the lower southern end of the site.
28. The project will provide staff car parking on the site in accordance with the Hampshire County Council On-Site School Parking Policy as follows:
- 40 parking bays (including 4 no twin-outlet electric vehicle charging points)
  - 2 accessible parking bays (including electric vehicle charging points)
  - 1 minibus bay
  - cycle/scooter storage.

### **Planning**

29. A planning application was submitted in February 2023 and a decision is anticipated in September 2023.

### **Construction Management**

30. The contractor will access the school site via Treetop Avenue.
31. Deliveries and movements of vehicles will be coordinated with the Developer of the Hounsme Fields development.

32. Willmott Dixon have been appointed as main contractor for the project through the Southern Construction Framework. Construction is anticipated to commence on site during Spring 2024 with the new building completing in Summer 2025.

### **Building Management**

33. Under a lease from the County Council, the selected academy trust will be responsible for the building management, repair, maintenance and insurance of the completed school building and site.

### **Professional Resources**

- |                              |   |
|------------------------------|---|
| 34. Architecture             | Universal Services – Property Services              |
| Landscape                    | Universal Services – Property Services              |
| Mechanical & Electrical      | Universal Services – Property Services              |
| Structural Engineering       | Universal Services – Property Services              |
| Interior Design              | Universal Services – Property Services              |
| Quantity Surveying           | Universal Services – Property Services              |
| Principal Designer           | Universal Services – Property Services              |
| Drainage Engineering         | Universal Services – Hampshire Engineering Services |
| Passivhaus Assessment        | Universal Services - Consultant Partner             |
| Whole Life Carbon Assessment | Universal Services - Consultant Partner             |

### **Consultation and Equalities**

35. A pre-planning application consultation was undertaken in September and October 2022.
36. The following have been consulted during the development of this project and feedback can be seen in overview in Appendix A:
- Children’s Services
  - Executive Lead Member for Children’s Services
  - Executive Member for Education
  - Local County Councillor
  - Local Residents
  - Fire Officer
  - Access Officer
  - Planning Department

### **Risk & Impact Issues**

#### **Fire Risk Assessment**

37. The proposals will meet and be approved through the statutory building regulation process, which includes formal consultation with Hampshire and Isle of Wight Fire Service.
38. The proposals have been assessed in line with the agreed Property Services procedures, including submission and approval by the Property Services fire safety review group. The assessment and discussion with Children's Services has concluded that the provision of sprinklers is not required in this instance, taking into consideration property protection and business continuity.

### **Health and Safety**

39. Design risk assessments, pre-construction health & safety information and the Health & Safety File will be produced and initiated in accordance with the Construction Design and Management Regulations for the proposed scheme.

### **Climate Change**

40. The project has been assessed against the County Council's climate change targets of being carbon neutral by 2050 and building resilience to the impacts of a 2°C rise in the global average temperature.
41. The project has been adopted as a Climate Change Primary School Pilot project, aiming to achieve three principal climate change objectives:
  - zero onsite direct carbon emissions, using an all-electric heating solution supported by photo-voltaic electrical energy generation;
  - low embodied carbon in its construction, aiming to achieve the Royal Institute of British Architects '2030 Challenge' embodied carbon target for 2030; and
  - improved resilience to overheating and flooding, designing to the forecast climate data for 2050.
42. In aiming to meet these objectives, the project will incorporate the following:

#### Heat and energy:

- a ground-source heat pump heating system, laid beneath the playing fields, supported by a roof-top photo-voltaic array optimised to offset the school's electrical demand;
- a building envelope designed and assessed in accordance with 'Passivhaus' principles, including highly insulated and air-tight construction, triple glazing and a whole building mechanical ventilation heat-recovery (MVHR) ventilation system;
- energy efficient lighting and heating controls, with daylight linked absence detection to ensure the minimum energy is used; and
- a formal post-occupancy evaluation and monitoring, to study the in-use energy performance of the completed building once fully occupied.

#### Embodied carbon:

- an off-site manufactured timber frame construction (with timber from sustainable forestry sources), together with low-carbon concrete substructure to minimise embodied carbon;
- a whole-life carbon assessment of all elements of the building design, aiming to achieve a target of 540 kgCO<sub>2</sub>e/m<sup>2</sup>; and
- a site waste management plan will be developed to ensure that during construction the principles of minimising waste are maintained.

Climate adaptation:

- a high performance 'green' roof comprising extensive sedum planting to help protect the roof from solar gain, support biodiversity and mitigate rainwater discharge;
- orientation of the long-axis of the building east-west to minimise solar gain, including a two-storey loggia to shade the south elevation to mitigate summer heat gain and glare, together with solar control triple-glazing;
- night-time purge ventilation during summer months using secure vents and the MVHR system to cool the building's interior;
- location of the main hard play court away from the south façade, separated by a line of tree planting, to mitigate localised summer heat gain;
- low water-consumption sanitary installations;
- onsite drainage swale; and
- soft landscaping to provide biodiversity net gain on the site.



**REQUIRED CORPORATE AND LEGAL INFORMATION:**

**Links to the Strategic Plan**

<b>Hampshire maintains strong and sustainable economic growth and prosperity:</b>	Yes
<b>People in Hampshire live safe, healthy and independent lives:</b>	Yes
<b>People in Hampshire enjoy a rich and diverse environment:</b>	Yes
<b>People in Hampshire enjoy being part of strong, inclusive communities:</b>	Yes

**Section 100 D - Local Government Act 1972 - background documents**

**The following documents discuss facts or matters on which this report, or an important part of it, is based and have been relied upon to a material extent in the preparation of this report. (NB: the list excludes published works and any documents which disclose exempt or confidential information as defined in the Act.)**

Document

Location

None

## **EQUALITIES IMPACT ASSESSMENT:**

### **1. Equality Duty**

The County Council has a duty under Section 149 of the Equality Act 2010 ('the Act') to have due regard in the exercise of its functions to the need to:

- Eliminate discrimination, harassment and victimisation and any other conduct prohibited by or under the Act with regard to the protected characteristics as set out in section 4 of the Act (age, disability, gender reassignment, marriage and civil partnership, pregnancy and maternity, race, religion or belief, sex and sexual orientation);
- Advance equality of opportunity between persons who share a relevant protected characteristic within section 149(7) of the Act (age, disability, gender reassignment, pregnancy and maternity, race, religion or belief, sex and sexual orientation) and those who do not share it;
- Foster good relations between persons who share a relevant protected characteristic within section 149(7) of the Act (see above) and persons who do not share it.

Due regard in this context involves having due regard in particular to:

- The need to remove or minimise disadvantages suffered by persons sharing a relevant protected characteristic that are connected to that characteristic;
- Take steps to meet the needs of persons sharing a relevant protected characteristic that are different from the needs of persons who do not share it;
- Encourage persons sharing a relevant protected characteristic to participate in public life or in any other activity in which participation by such persons is disproportionately low.

### **2. Equalities Impact Assessment:**

An Equalities Impact Assessment has been carried out and is contained in Appendix 2.

**FEEDBACK FROM CONSULTEES:****OTHER EXECUTIVE MEMBERS:**

<b>Executive Member &amp; Portfolio</b>	<b>Reason for Consultation</b>	<b>Date Consulted</b>	<b>Response:</b>
Councillor Steve Forster, Executive Member for Education	Portfolio Holder		

**OTHER FORMAL CONSULTEES:**

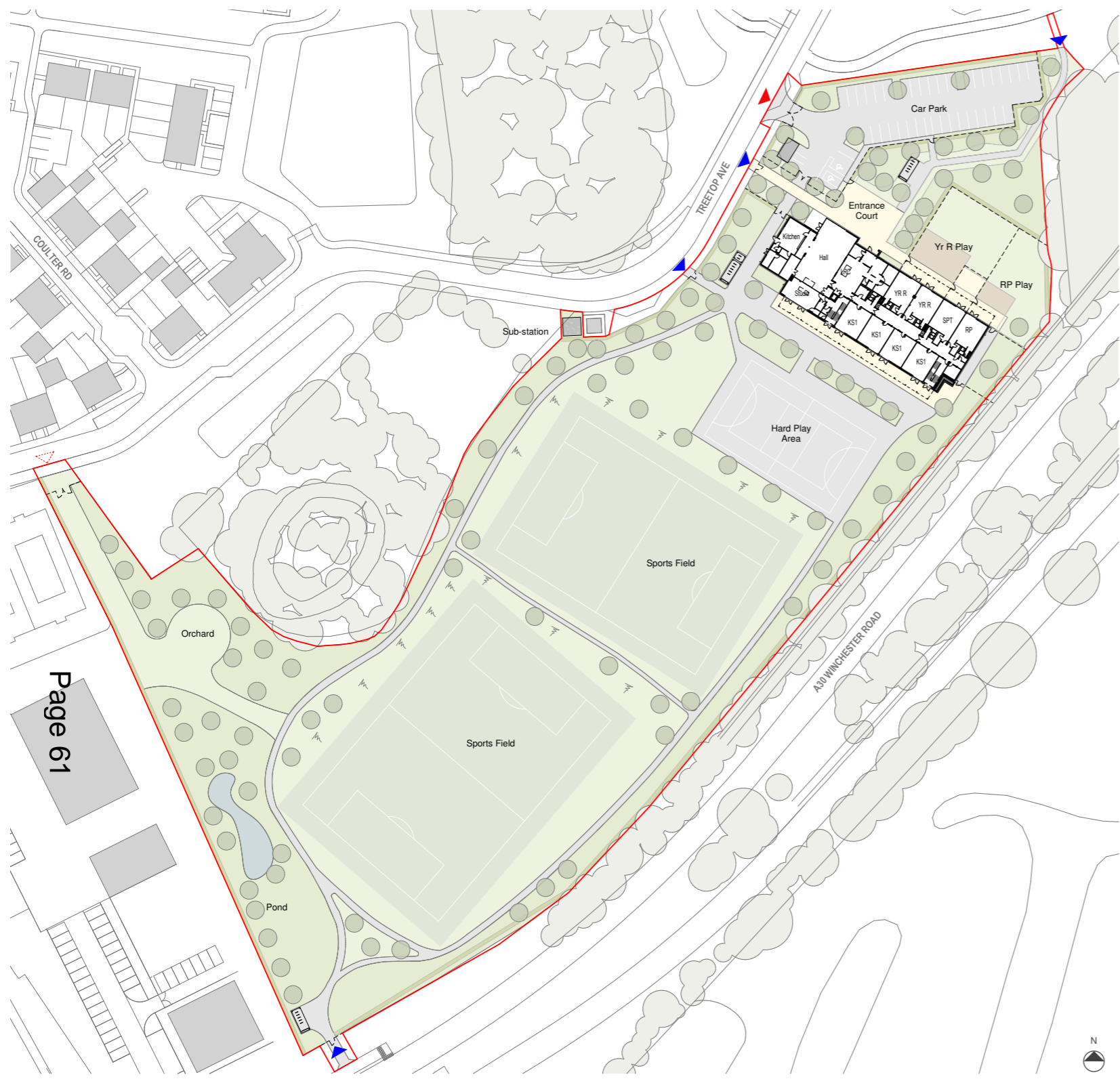
<b>Member/ Councillor</b>	<b>Reason for Consultation</b>	<b>Date Consulted</b>	<b>Response:</b>
Councillor Juliet Henderson	Local Member for Basingstoke	21/09/2022	Cllr Henderson was fully supportive of the proposed new school

This page is intentionally left blank

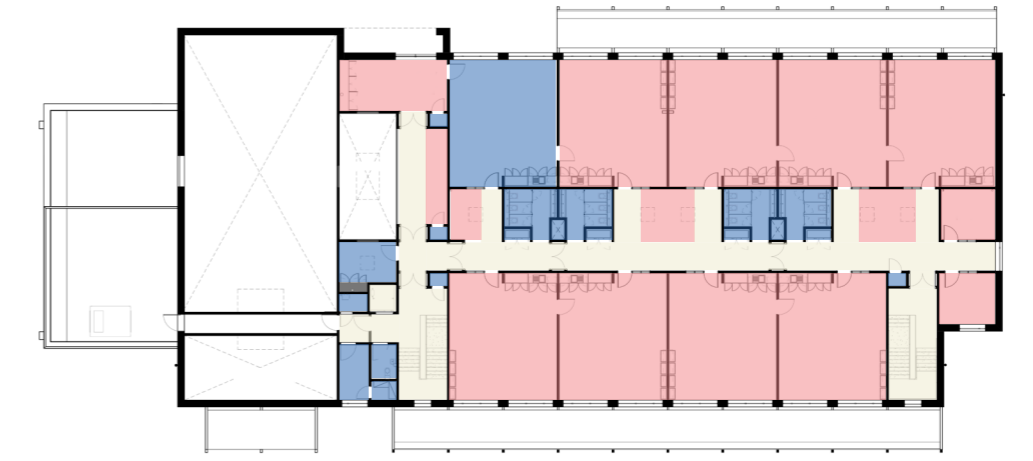
**Hounsme Fields**  
2FE Primary School  
with resource provision

**Key**

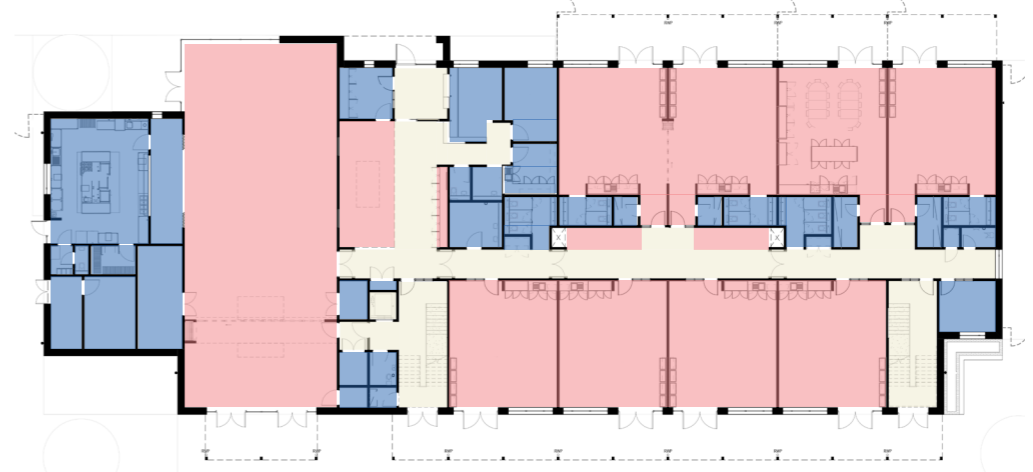
- Pedestrian Entrance
- Vehicle Entrance
- Grounds Maintenance Entrance
- Teaching Areas
- Non-Teaching Areas
- Circulation Areas



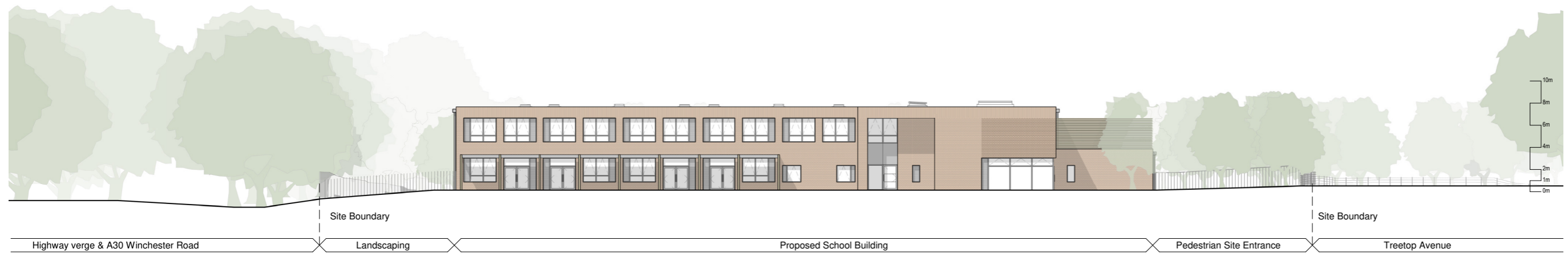
Proposed Aerial View: Looking South



Proposed First Floor Plan NTS



Proposed Ground Floor Plan NTS



Proposed North Facing Elevation NTS

© Crown Copyright and database rights 2020. All rights reserved.  
HCC 100019180

**PROJECT APPRAISAL**

NTS @ A3

P11378-HCC-00-ZZ-1900

This page is intentionally left blank



## Equality Impact Assessment

### What is an Equality Impact Assessment (EIA) and why does the County Council do them?

The [Public Sector Equality Duty](#) (PSED) is an obligation within the [Equality Act 2010](#) ("the Act"), which asks public authorities, like Hampshire County Council, to give 'due regard' to equality considerations, in particular to:

- Eliminate unlawful discrimination, harassment and victimisation and other conduct prohibited by the Act.
- Advance equality of opportunity between people who share a protected characteristic and those who do not.
- Foster good relations between people who share a protected characteristic and those who do not.

This includes assessing the impact of policies and practices on individuals and communities with a protected characteristic, as defined in the Act and some other specific groups. The County Council uses EIAs to ensure it has paid 'due regard' to equalities considerations when there are changes to a service or policy, a new project or certain decisions.

EIA author	Position & Department	Contact
Glenn Parkinson	Strategic Development Officer Children's Services	glenn.parkinson@hants.gov.uk Tel:07958 501922

Title:	Hounsome Fields, Basingstoke - new primary school
Related EIAs:	None
Page 63	

EIA for Savings Programme:	No
Service affected	Children's Services - Education - the project is to build a new primary school at Hounsome Fields, Basingstoke
Description of the service/policy/project/project phase	To open a new primary school at Hounsome Fields, Basingstoke catering for 420 primary age pupils and resourced provision for up to 8 pupils with Special Educational Needs and Disability (SEND). It is planned the school opens in September 2025
New/changed service/policy/project	Planning permission has been granted for new housing at Hounsome Fields and the former Golf Course site in southern Basingstoke. Hounsome Fields is a site for 700 dwellings and Golf Course for 1,000 dwellings. The new housing will generate additional primary age pupils and due to the large scale of development a new primary school is proposed to serve the new pupils generated from the new housing that will be built. The new primary school is due to be opened in September 2025, subject to the continued planned build-out rate of new housing, that will generate the pupil yield. The new school is to be located on the Hounsome Fields housing site and will cater for 420 primary age pupils from the age of 4 to 11. The new school will also provide up to 8 places for pupils with Special Educational Needs and Disability (SEND).

Engagement
<p>Pre-planning consultation took place between the 26th of September and 24th October 2022. This was undertaken by writing to the residents on Hounsome Fields where approximately 140 letters were hand delivered to properties. In addition, e-mails were sent to other consultees which included Basingstoke and Deane Borough local elected members, HCC local elected members and relevant officers and Diocesan Bodies. These letters and e-mails contained a link to a website which provided information on the location and plans for the school together with information through some FAQ's.</p> <p>A total of 11 responses were received. The responses covered a number of areas relating to the location of the school buildings on the school site, the location, number and arrangements for pedestrian access to the school, the amount of car parking spaces for staff and the overall capacity of the school. The comments and responses will be incorporated within the planning application documents to highlight that consultation took place and the points raised were considered as part of the planning application process. It is expected that the planning application will be submitted in January 2023.</p>



As part of the process to secure an Academy School Sponsor, once appointed they will undertake further consultation prior to the opening of the school.

## Equalities considerations - Impact Assessment

### Age

Impact on public	Positive
Impact on staff	Positive
Rationale	The school will provide places, when open, for local children to attend school from the ages of 4 to 11. This will provide school places close to the area of demand thus giving opportunities for active travel to school and to promote community cohesion. The school will cater for 420 pupils thus providing sufficient places for the anticipated numbers from the local housing. The school will offer new job opportunities.
Mitigation	

### Disability

Impact on public	Positive
Impact on staff	Neutral
Rationale	The school building will be fully accessible to all staff and pupils and will also include resourced provision for pupils with special educational needs (SEND). Thus, places will be provided locally for any child with a disability who resides within the school's catchment area.
Page 65	

Mitigation	
------------	--

## Gender Reassignment

Impact on public	Neutral
Impact on staff	Neutral
Rationale	It is assessed that there is a neutral impact on gender reassignment. The new school is a primary school catering for pupils from ages 4 to 11 and will provide unisex accessible toilets as part of the facilities within the new school building and the new school sponsor will ensure that relevant policies are in place to support children as required.
Mitigation	

## Pregnancy and Maternity

Impact on public	Neutral
Impact on staff	Neutral
Rationale	It is assessed that there will be a neutral impact on pregnancy and maternity. The new school academy sponsor will ensure relevant policies are in place to support people who are pregnant or need maternity support. The building will be fully accessible so anyone who is pregnant will be able to access all areas.
Mitigation	

Impact on public	Neutral
Impact on staff	Neutral
Rationale	It has been assessed there will be neutral impact on race. The new school academy sponsor will ensure there are relevant policies and procedures in place.
Mitigation	

## Religion or Belief

Impact on public	Neutral
Impact on staff	Neutral
Rationale	The new school academy sponsor will ensure the relevant policies and procedures are in place in respect of this . It is assessed that there is no impact on race or religion as a result of the provision of the new school.
Mitigation	

## Sex

Impact on public	Neutral
Impact on staff	Neutral
Rationale	The new school academy sponsor will ensure that the relevant policies and procedures are in place for when the new school opens. As such, there is felt to be a neutral impact on sex.

Mitigation	

## Sexual Orientation

Impact on public	Neutral
Impact on staff	Neutral
Rationale	The new academy sponsor will ensure that the relevant policies and procedures relating to this protected characteristic will be in place for when the new school opens and starts to admit children. There policies will relate to both staff, the public users of the school accommodation and children. There is felt to be a neutral impact on sexual orientation relating to the provision of the new school.
Mitigation	

## Marriage and Civil Partnership

Impact on public	Neutral
Impact on staff	Neutral
Rationale	As this is the provision of a new school it has been assessed there is a neutral impact on Marriage and Civil Partnership.
Mitigation	

## Poverty

--	--

Impact on public	Neutral
Impact on staff	Neutral
Rationale	As this is a new school it has been assessed that there is a neutral impact on Poverty.
Mitigation	

## Rurality

Impact on public	Neutral
Impact on staff	Neutral
Rationale	This school is located in the urban area of Basingstoke to serve new housing at Hounsome Fields and the former Basingstoke Golf Club. It has been assessed that there is a neutral impact on Rurality due to the location of the school in an urban area.
Mitigation	

Geographical Impact:

## Equality Statement

Additional information:

None

Overview Statement:

A summary assessment to show that due regard to the Public Sector Equality Duty has been paid, which is undertaken when a full EIA is not needed:

EIA reference number: 00322

Date of production of EIA for publication: 01/03/2023